



# WOODSIDE INDUSTRIES

701-265-8212 406-756-9880 833-966-3463

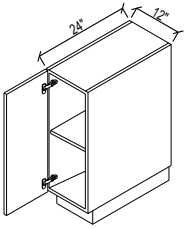
Cavalier, ND

Kalispell, MT

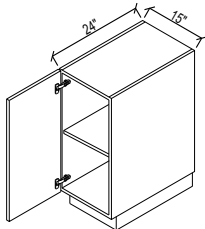
Burnsville, MN

BASE CABINETS:  
36" COUNTER HEIGHT  
30 1/2" CASE HEIGHT  
24" CASE DEPTH

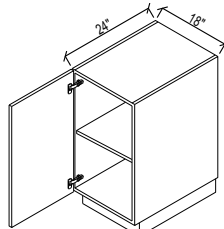
PRODUCT NUMBER: 24 B 36 24  
WIDTH  
TYPE  
DEPTH  
HEIGHT



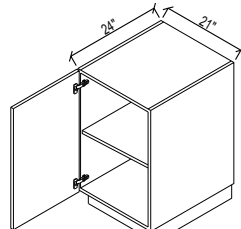
12B3624



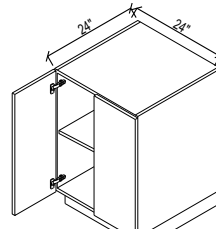
15B3624



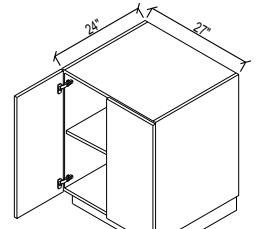
18B3624



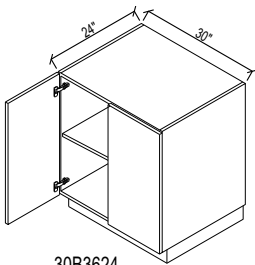
21B3624



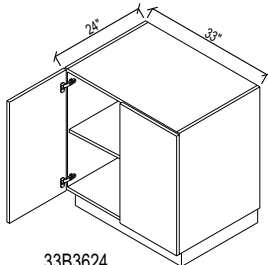
24B3624



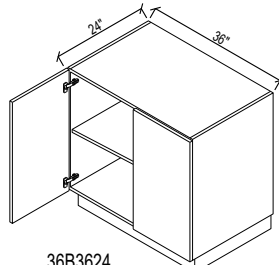
27B3624



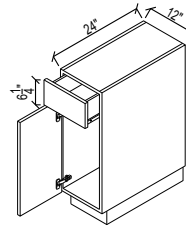
30B3624



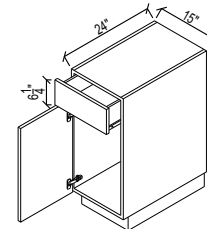
33B3624



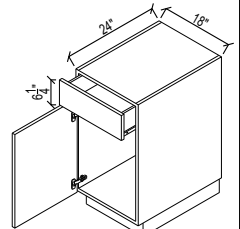
36B3624



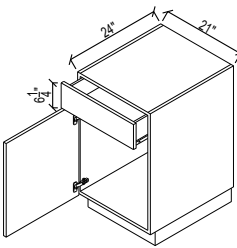
12DB3624



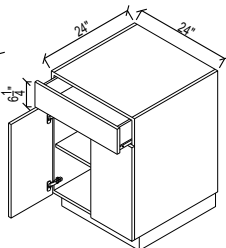
15DB3624



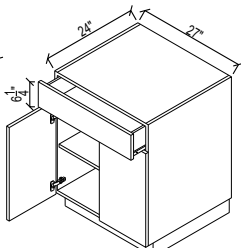
18DB3624



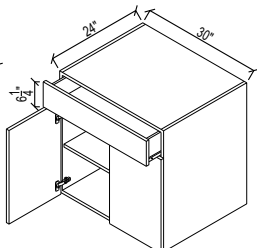
21DB3624



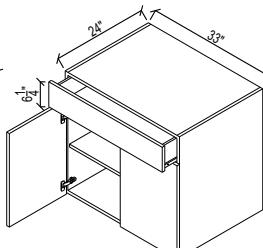
24DB3624



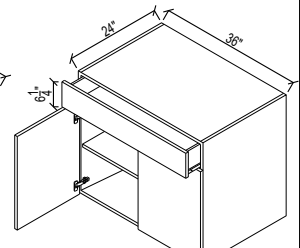
27DB3624



30DB3624

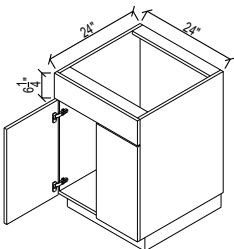


33DB3624

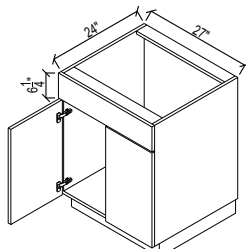


36DB3624

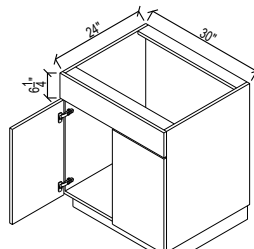
### SINK BASE CABINETS:



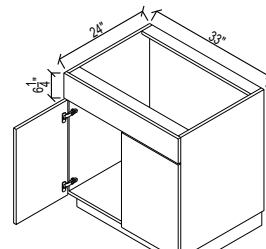
24FSB3624



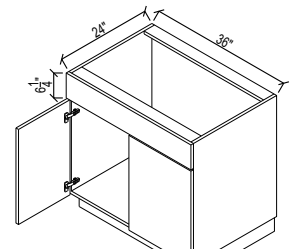
27FSB3624



30FSB3624



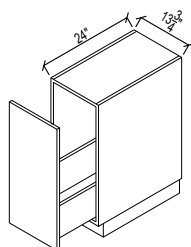
33FSB3624



36FSB3624

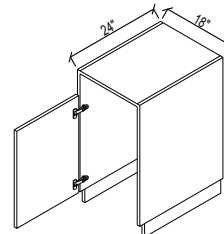
### BASE "TRASH" CABINETS:

Accommodates 50 qt. single waste bin.  
Gas spring assisted soft open slides  
allow unit to open smoothly and the  
soft close shuts softly, even under the  
heaviest loads with 150 lb slides.



14TB3624

Single large waste bin sits on floor.  
Reduced height door provides easy  
access opening to waste bin for  
disposal of larger items.



18TB3624



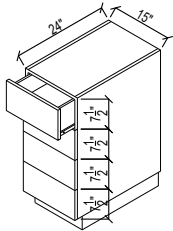
# WOODSIDE INDUSTRIES

701-265-8212 406-756-9880 833-966-3463

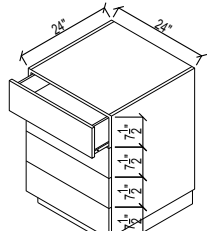
Cavalier, ND

Kalispell, MT

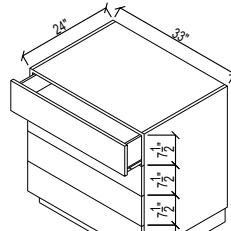
Burnsville, MN



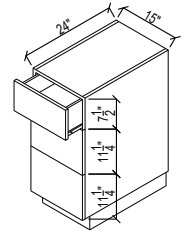
15D4B3624



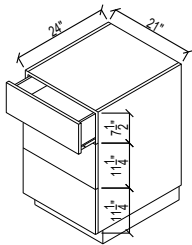
24D4B3624



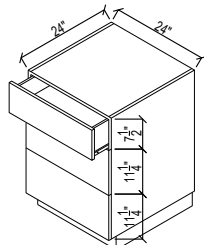
33D4B3624



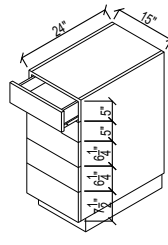
15D3B3624



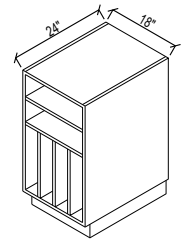
21D3B3624



24D3B3624



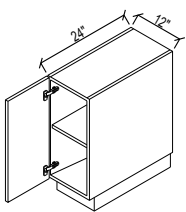
15D5B3624



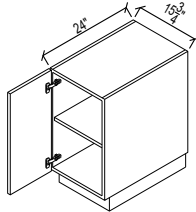
180B3624

BASE CABINETS:  
30" COUNTER HEIGHT  
24 1/2" CASE HEIGHT  
24" CASE DEPTH

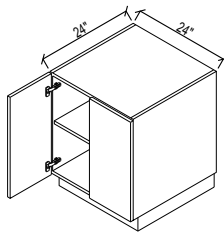
PRODUCT NUMBER: 24 B 30 24  
WIDTH TYPE DEPTH HEIGHT



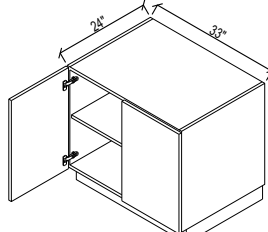
12SB3024



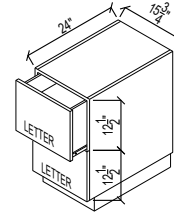
16SB3024



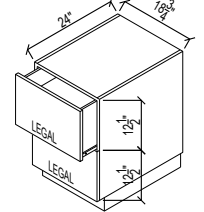
24SB3024



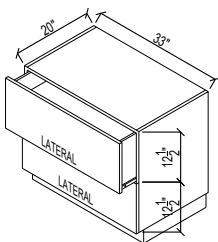
33SB3024



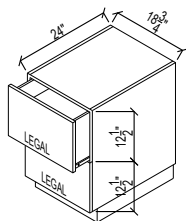
16FB3024



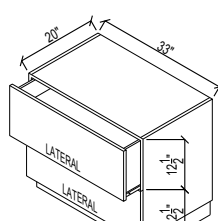
19FB3024



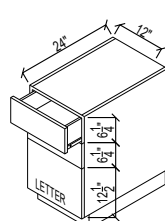
33FB3020



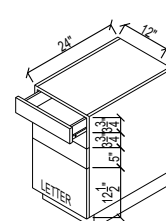
19FB3024



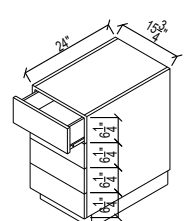
33FB3020



16DFB3024



16PFB3024



16DB3024